



公路[®]
医生

PM220 Hot-in-place Patching

**Faster, Better Quality, Less labor, Low cost, Low Noise
100% Recycling, Market Proven for 20 years**

Municipal Class



- Compact Dimension for Municipal Roads
- Transformable Heating Panel for Transverse Cracks
- Dual Hoppers Provide Two Different Types of Asphalt Mix
- Equipped with all Necessary Tools for Road Repair



ISO 9001: 2008
Certificate No.02914Q20407R3M



ISO 14001: 2004
Certificate No.02914E20134R2M



OHSAS 18001-2007
Certificate No.02914S20087R1M

Components

③ Electrical control box
Easy to operate

② Single drum vibratory roller

① The lifting mechanism
Load and unload not only the roller, but also the LPG cylinders



④ Tool box
Carry auxiliary tools such as hydraulic pick hammer and cutting machine

⑤ Right discharging gate

⑥ Chassis

⑪ LPG cylinders
Local Standard cylinders, provide enough fuel for the hopper and heating panel

⑫ Two hoppers
2 independent hoppers hold 2 different asphalt mixes

⑦ LED arrow board & strobe light



⑩ Left discharging gate

⑨ Emulsion asphalt spraying system
Located under the chassis for convenient use.

⑧ Heating panel
Heat up asphalt road rapidly, can be transformed to 3.6 x 0.95m for transverse cracks repair

* TM220

Version without Heating Panel



Freotech Hot-in-place VS Traditional Saw-Break-Fill

Freotech Hot-in-place Patching

-  20mins
-  2-3 Workers
-  1 Hot-in-place Patcher

00:08:00



Heating

00:10:00



Scarifying

00:15:00



Spraying Emulsion Asphalt

00:20:00






Adding New Mix,
Leveling and Compacting

VS

Process Comparison

- 1 Sawing & Breaking-free
- 2 Dust & Disposal-free
- 3 Integrated & Convenient function
- 4 Noise-minimum
- 5 New Asphalt Saving

Traditional Saw-Break-Fill

-  90mins
-  More than 5 Workers
-  More than 7 Machines

00:30:00



Traditional
Saw-Break-Fill

01:00:00



Breaking

01:10:00



Scrap Material
Removing

01:15:00



Cleaning

01:17:00



Spraying Tack
Coat

01:22:00



Adding New
Mix, Leveling
and Compacting

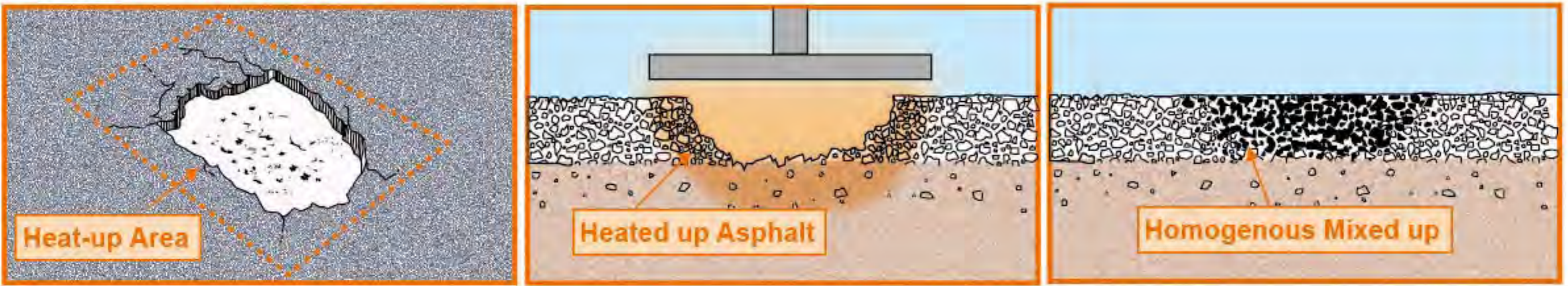
01:30:00



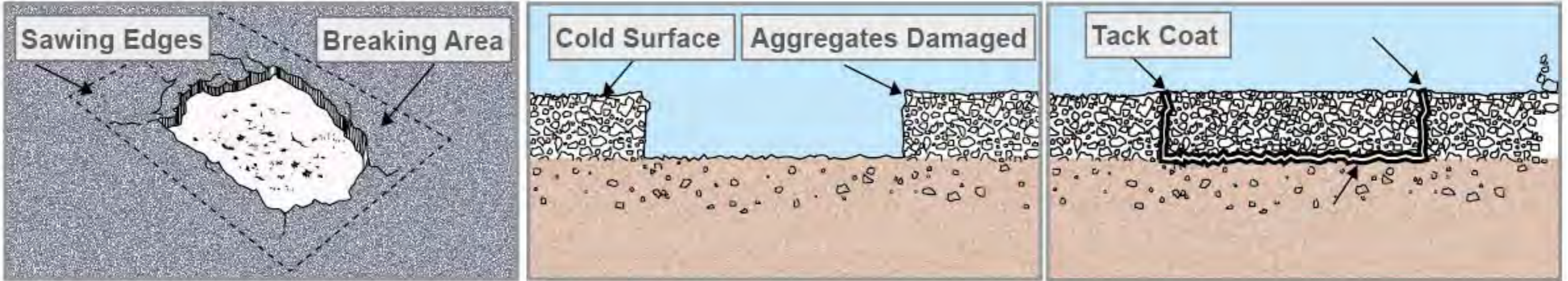
Compacting

Quality Comparison

Freetech Hot-in-place Patching



Traditional Saw-Break-Fill

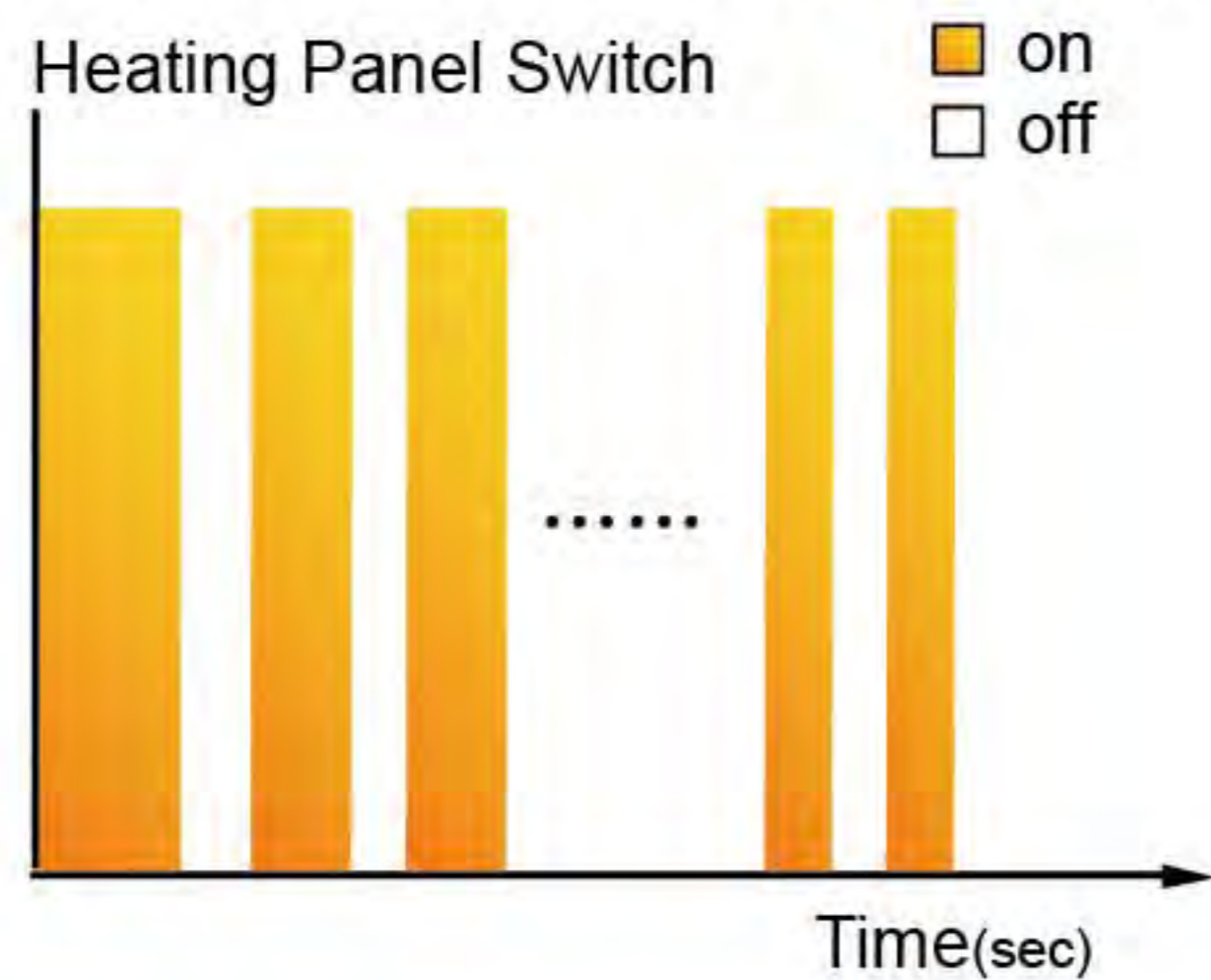


Features & Benefits

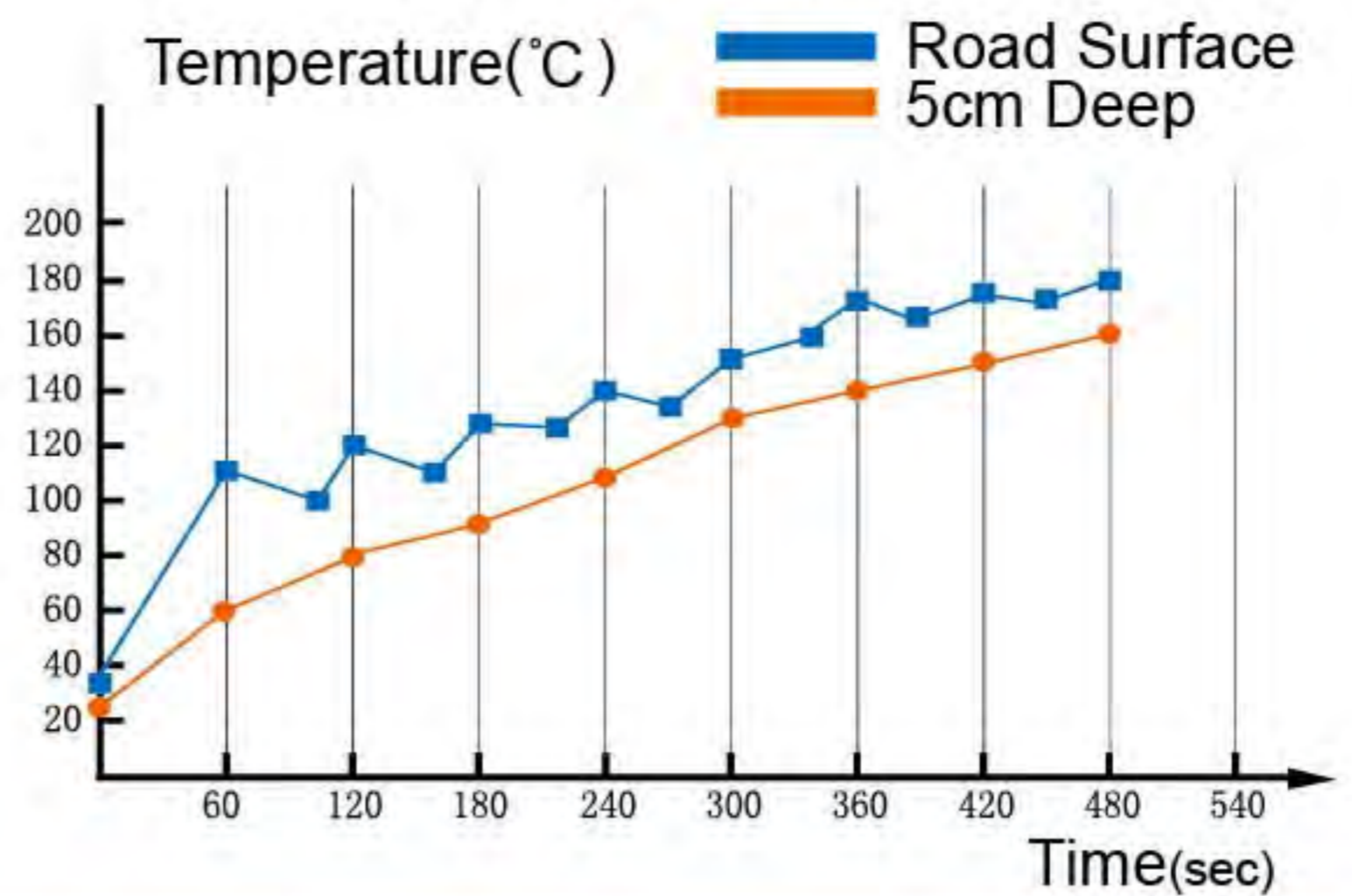
Heating Panel

- Intermittent radiant heating 4-6 cm deep to avoid overheating or aging, superior to other heating technology

Freetech Intermittent Radiant Heating



Time vs Temperature



- * Transformable heating panel of 3.8m width covers the whole lane



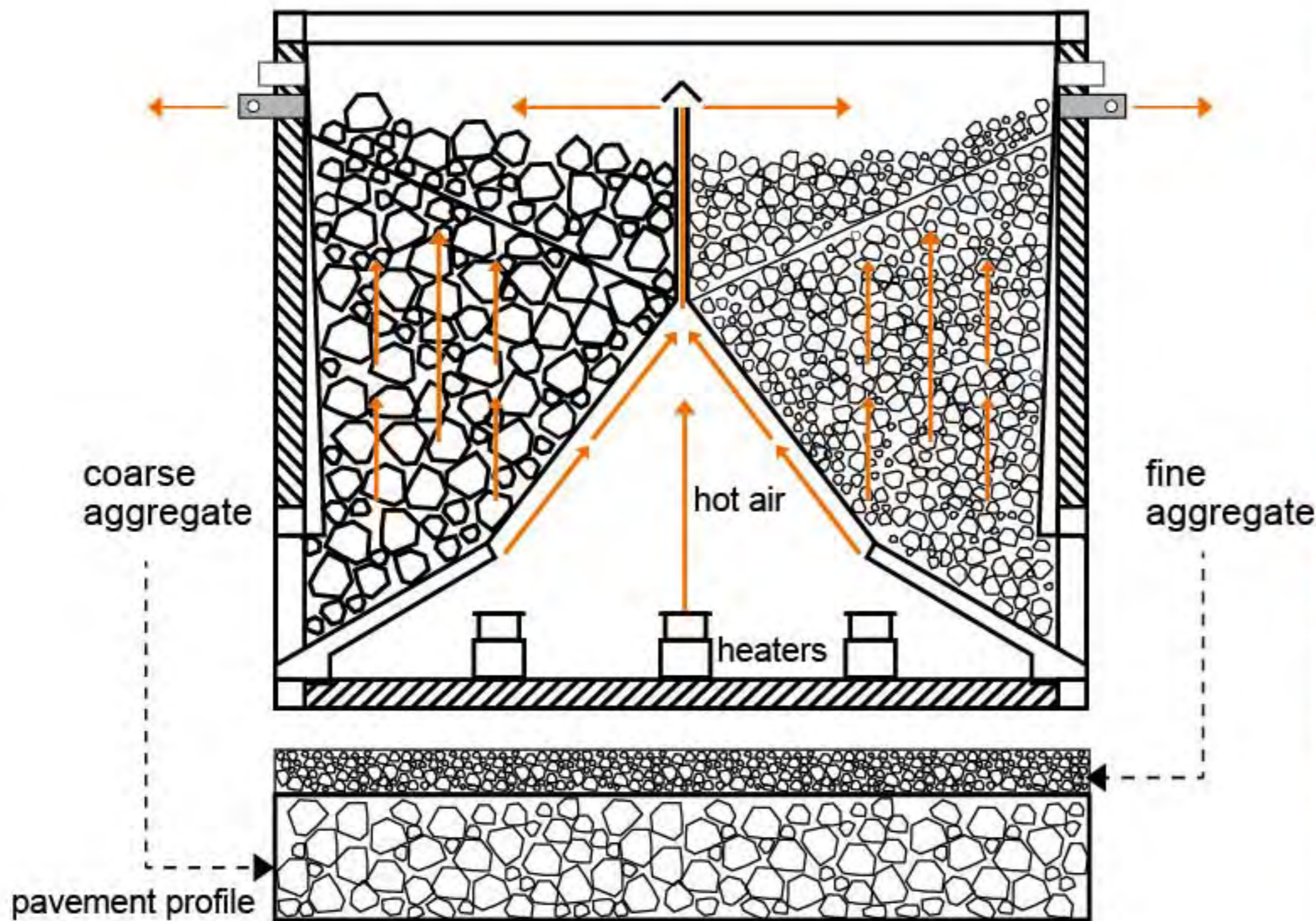
Normal size: 1.9m×1.5m



Transformed size: 3.8m×0.75m

■ Asphalt Hopper

- Large capacity of 2m³, 2 independent hoppers can hold two different types of asphalt mixes
- 2 discharging gates on both left and right sides



For both upper & lower layer defects patching



Convenient design for works

■ Labor and Cost Saving Configuration

- Lifting mechanism for roller and LPG cylinders loading and unloading
- Compact dimension suitable for all types of roads, especially city's curved and narrow ones
- Low noise level, especially suitable for night works
- Easy-operated centralized control system



PM220 at site



Specifications

Heating Panel Dimensions	1.8m×1.9m	3.6m×0.95m (transformed)
Chassis GVW (Local Standard Model)	11tons	
Dual Asphalt Hopper Capacity	2m ³	
LPG Cylinder	50kg×2	
Emulsion Spraying System	80L	clog-free, compressed air type, automatic heating&thermostatic
Vibratory Roller	Operating Weight: 490kg	Centrifugal Force: 16kN

We provide other options to suit different applications. Please contact us for more details. Specifications can be changed without prior notice for continual products improvement.

Freotech Road Recycling Technology (Holdings) Limited

Website: <http://www.freotech.com.hk/en>

Email: <sales-hk@freotech.com.hk>

Tel: (852) 23309600

Fax: (852) 23637987

Address:

29/F., Chinachem Century Tower, 178 Gloucester Road, Wan Chai, Hong Kong



Facebook:

facebook.com/FreotechHIP